

LINKED ENERGY
EcoSkid
PORTABLE REMOTE POWER PLANT



Image shown may not reflect actual package

Output Ratings

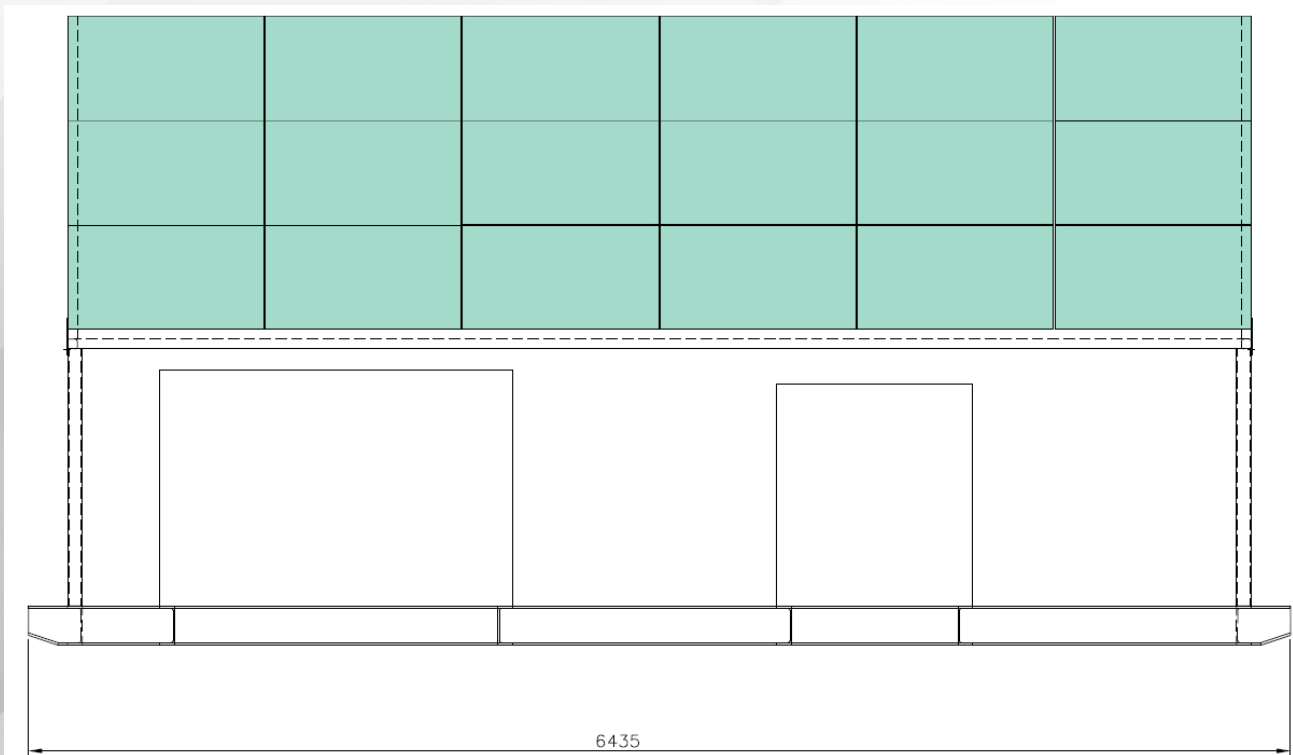
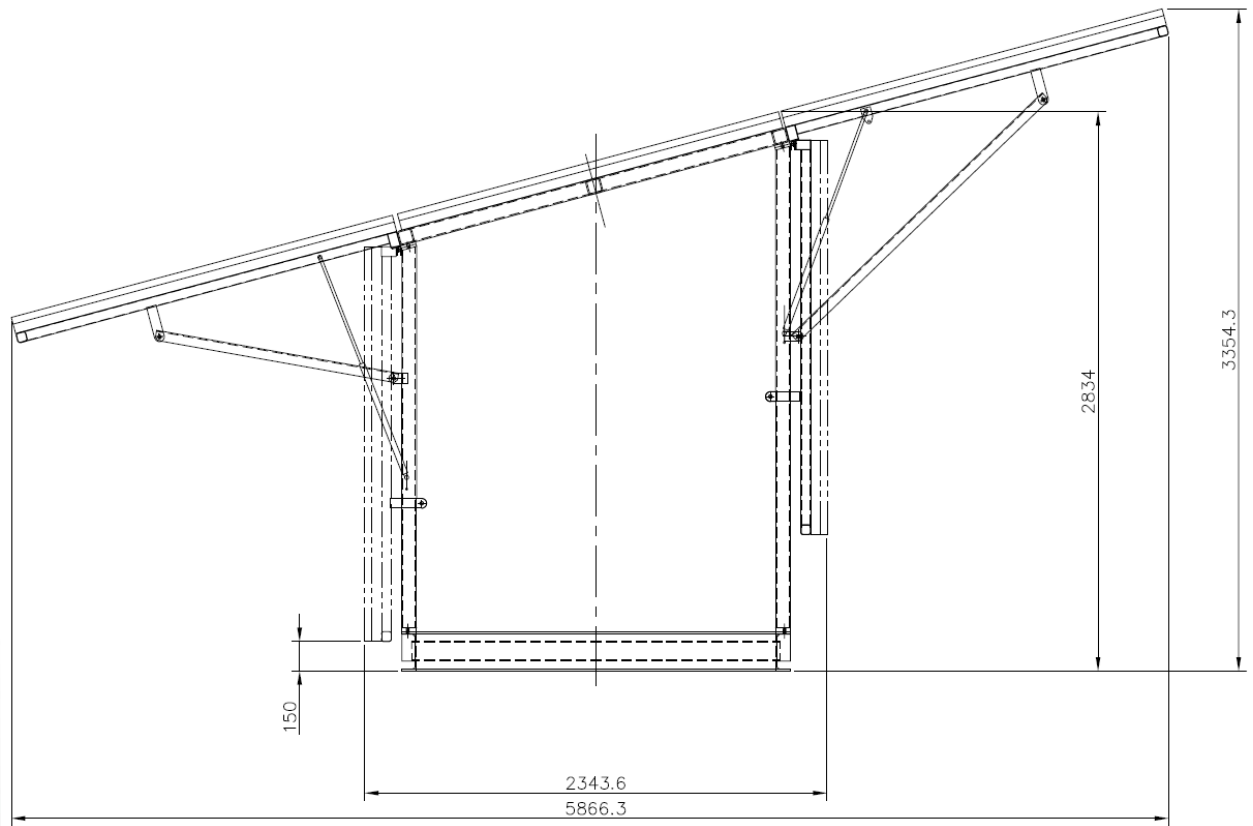
*Ratings at power factor 1

DIESEL GENERATOR	INVERTER-CHARGER	MPPT	BATTERY	SOLAR
230VAC, 50Hz	230VAC, 50Hz	150V, 85A	48VDC	V _{OC} = 95.88V
11kVA	8kVA	Two units	16x3.3kWh =52.8kWh	18x 380W =6.84kW
Pramac GCW15P	Victron Quattro 48/8000	Victron Smartsolar 150/85	PowerPlus Energy LiFe 4833	Phono Solar PS380M-24

Linked Energy Eco-Skid Mechanical Data

Characteristic	Value	Unit
Overall Dimension (Transport)	6435L x 2344 x 2834H	mm
Overall Dimension (Installed)	6435L x 5866 x 3355H	mm
Overall Weight	3,700	kg
All steel construction, Hot dip galvanised frame		
Switchboard 316 Stainless, Mine specification		
Six gas struts for ease of opening roof panels		
Forced ventilation, Fan maintains IP44 Protection rating		
Internal AC/DC electrical segregation		

Skid Overall Dimensions





Diesel Generator Technical Data

Characteristic	Value	Unit
Frequency	50	Hz
Voltage	230	V
Power Factor	1	
Phases	1	
Standby Power LTP	12	kVA
Prime Power PRP	11	kVA
Dimensions	1650L x 1000W x 1130H	mm
Dry Weight	500	kg
Fuel tank capacity	51	L

Engine & Alternator Technical Data

Characteristic	Value	Unit
Engine manufacturer	Perkins	
Model	403D-15G	
Exhaust emission level	Stage IIIA	
Engine cooling system	Water	
Number of Cylinders	3 inline	
Speed Governor	Mechanical	
Prime gross power PRP	12.2	kW
Maximum gross power LTP	13.5	kW
Oil capacity	6	L
Coolant capacity	6	L
Specific fuel consumption @ 75% PRP	252	g/kWh
Specific fuel consumption @ PRP	248	g/kWh
Cooling System	Mounted radiator, thermostatically controlled system with belt driven coolant pump and pusher fan	
Controller	ComAp IntelliLite NT AMF26-P	
Alternator Type	LSA 40 VS2	
Alternator Shunt	JM/4	
No# Wires	4	

Inverter-Charger Technical Data

Characteristic	Value	Unit
Continuous output power at 25°C	8,000	VA
Peak Power	16,000	W
Maximum feed through current	2x 100	A
Charge voltage (absorption)	57.6	V _{DC}
Charge voltage (float)	55.2	V _{DC}
Storage Mode	52.8	V _{DC}
Charge current house battery	110	A
Battery Temperature Sensor	Yes	
Features		
	BMV700 Battery Monitor	
	Color Control Panel HMI	



Battery Technical Data

Characteristic	Value	Unit
Nominal Voltage	48	V _{DC}
Storage Capacity	3.3	kWh
Maximum Current (Circuit Breaker limited)	63	A
Charge/Discharge Cycles	2,700 @ 100% DoD	
*Depth of Discharge (DoD)	5,000 @ 75% DoD	
	10,000 @ 50% DoD	
BMS Overvoltage cut-off (programable)	58.4	V _{DC}
BMS Undervoltage cut-off (programable)	40	V _{DC}
BMS Short circuit cut-off	Programmable	
BMS Over-temperature cut-off	65	°C
Charge	C1 maximum, C2 recommended	
Circuit Breaker	2-pole 63A	
Lithium Composition	Lithium-ferro-phosphate (LiFePO ₄ or LFP)	

PV Module Technical Data

Characteristic	Value	Unit
Type	Mono, 2x72 cells	
Rated Power	380	Watts
Tolerance	-0/+5	%
Rated Current (I _{MPP})	9.42	A
Rated Voltage (V _{MPP})	40.35	V
Short Circuit Current (I _{SC})	9.87	A
Open Circuit Voltage (V _{OC})	47.94	V
Power Temperature Coefficient	-0.368	%/°C



Optional Extras

Linked Group services currently offer the following optional extras for the Linked Eco-Skid:

- Enlarged or External Fuel Tank
- PV Module Auto-washing Feature
- External IP Boards

Alternative Models

Linked Group Services is able to customise the Linked Eco-skid to each clients needs. To this end there are many options available for the skid to increase its functionality and power rating.

Bladon Jets MTG Technical Data

Characteristic	Value	Unit
Power Output	12,000	kW

Selectronic Multimode Inverter Technical Data

Characteristic	Value	Unit
Continuous output power	7,500	W
Peak Power	18,000	W
Maximum Output	15kW + Inverter Rating	



Materials and specifications are subject to change without notice. The SI unit is used in this publication. Linked Group Services respective logs, corporate and product identity used herein, are trademarks of Linked Group Services and may not be used without permission. To be read in conjunction with the respective manufacturers' datasheets and manuals by competent persons. Manufacture datasheets overrule LGS information where conflict may occur.